



Setup & User Guide

Table of Contents

Purpose.....	3
Obtaining the Software.....	3
Installing the Software.....	3
Installing the INI File:	3
eClick Setup Screen.....	4
Com Port:	4
User Name and Password:	4
Start Page:.....	4
Auto Login:	4
Use SSL:.....	5
Automatically Enter Next Item:	5
Automatically Enter Quantity:.....	5
Automatically Accept Quantity:.....	5
Do Not Combine Multiple Clicks of Same Item:	5
Factory Reset Button:	5
Set Time Button:.....	5
Save Button:	5
Cancel Button:	5
Main Screen:.....	6
Setup Button:	6
Remove All Button:.....	6
Show Raw Data Button:	6
Review Order Button:.....	6
Close Button:	6
Order Screen:.....	7
Remove Item Button:	7
Change Quantity Button:	7
Order Now Button:	7
Cancel Button:	7
Entering The Order.....	7
Starting The Order:	8
eClick Status Screen:	8
Completing The Order:.....	8

Purpose

This document describes the setup and configuration of the eClick Reader software. The eClick Reader software is a user-based application that reads and then processes scanned bar codes.

Obtaining the Software

The eClick Reader software is available from the Reliant Web Site. You can go to the software download page by typing <http://www.rbp.com/order/eclick-setup.shtml> in your preferred web browser.

Installing the Software

The eClick Reader Full Setup is an executable zip file. Double-click the downloaded eClick. EXE file to extract and setup the program. Follow the on-screen instructions for installing the application.

Installing the INI File:

The configuration INI file must be installed in the same folder as the EXE file. Copy this special configuration file to the same folder you installed the eClick Reader software. This folder is normally "Program Files – OPSoftware:"

eClick Setup Screen

eClick Reader Setup

COM Port: COM3

Web Address: http://rolos.rbp.com/service

User Name: 38521

Password: xxxxx

Start Page: hequick.asp

Auto Login Automatically enter next item

Use SSL Automatically enter quantity

Automatically accept quantity

Do not combine multiple clicks of same item

Factory Reset Set Time Save Cancel

Com Port:

Change the COM Port on this screen to match the port you installed the clicker on. This is set either by the physical port you installed the clicker on, or the virtual port installed by the USB drivers. It is OK to try different ports to locate the clicker. The software will report a “Communications Error” if the port is incorrect or no clicker can be found on the specified port.

User Name and Password:

The User Name and Password are only required if you want to perform the Auto Login function. You should enter valid user and password information in these fields if you want to automatically login to the ROLOS³ Website.

Start Page:

This is another field only necessary if you want to automatically login to ROLOS³. This field allows you to specify a start page to direct the user to after the login completes. Please keep the default hequick.asp.

Auto Login:

When selected, this will cause the eClick Reader to automatically login to the ROLOS³ Website using the specified user and password. Leave this option un-checked if you would like to login manually and select type your own User ID and Password with each order.

Use SSL:

When selected, eClick will login to the ROLOS³ Website using SSL. SSL is an optional function of ROLOS³ and must be enabled by Reliant Business Products to function properly.

Automatically Enter Next Item:

When selected, eClick will automatically enter the next item to order during the ordering process. Un-click this option if you want to manually tell eClick when to enter the next item by clicking the “Add Item” button.

Automatically Enter Quantity:

When selected, eClick will automatically enter the quantity to order as each item is entered. If the Automatically Accept Quantity option is not selected, then eClick will wait on you to either accept or enter a new quantity before continuing.

Automatically Accept Quantity:

When selected, the quantity entry will automatically be accepted by eClick requiring no user intervention. When not selected, eClick will wait on the user to confirm the quantity.

Do Not Combine Multiple Clicks of Same Item:

This option causes eClick to treat multiple clicks of the same item as separate order line items. The normal or default operation is to combine multiple clicks of the same item into a single line with multiple quantities. For example, if this option is NOT selected, and the user clicks the same item two times, eClick will add the item to the order once with a quantity of TWO. If this option is selected, eClick will add two lines of the same item each with a quantity of ONE.

Factory Reset Button:

This Button performs a ‘Factory Reset’ on the clicker device. It clears any codes from the clicker and resets all the ‘default’ settings on the clicker. Use this function if you have inadvertently set some unwanted option by holding down the button or buttons on the clicker.

Set Time Button:

This Button sets the time in the clicker device to the time on the current computer. The clicker stores the ‘date and time clicked’ for each entry in its memory.

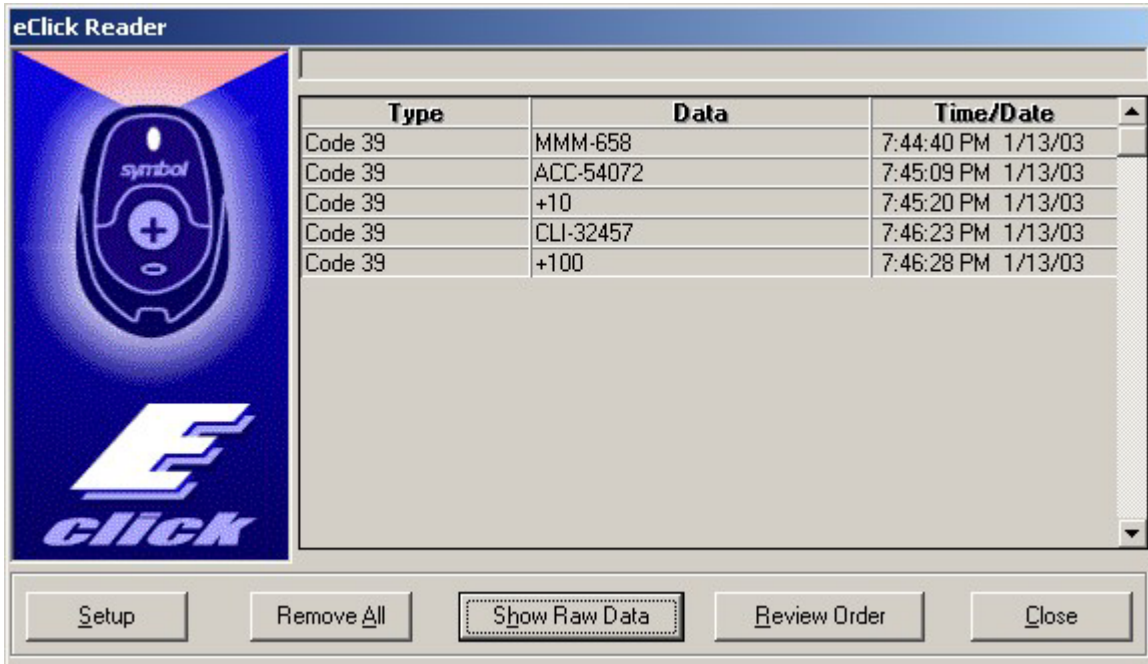
Save Button:

Click the Save Button if you made any changes on this screen.

Cancel Button:

Click the Cancel Button to discard any changes you made on this screen. The Factory Reset and Set Time functions are not affected by Cancel as these functions happen immediately.

Main Screen:



The Main eClick Screen shown above is the first screen to appear. Use the buttons located at the bottom of this screen to perform eClick actions.

Setup Button:

Click this button to display the eClick Setup screen described previously.

Remove All Button:

This button will remove all data from the clicker device. This action cannot be un-done. You should only perform this action when ALL the data in the clicker is to be removed.

Show Raw Data Button:

This button shows the data currently contained in the clicker device. All the codes are shown, just as stored, including special quantity codes. This function is useful for debugging and/or explaining why certain items are appearing on the order list.

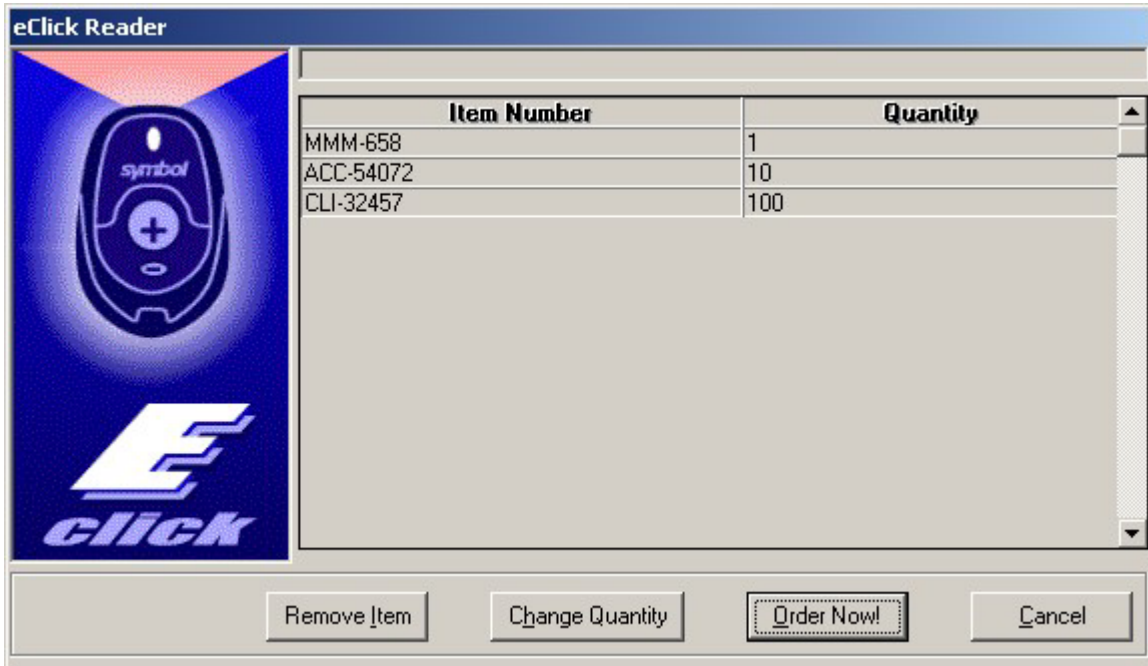
Review Order Button:

This button starts the ordering process by displaying the Order Screen. You can change your order before proceeding to the next step.

Close Button:

This button closes the eClick Reader. Any data contained in the clicker device remains.

Order Screen:



The Order Screen gives you the opportunity to review your order prior to continuing with the next step of actually placing your order.

Remove Item Button:

This button will remove an item from the order list before the next step. You can click on any item, and then click this button to prevent the item from being ordered.

Change Quantity Button:

This button will allow you to change a quantity before sending the order on. Click on any item and then choose this button to change a quantity.

Order Now Button:

This button will begin the next step of placing the order into the ROLOS³ Website. Depending on how you set the options, you may be automatically logged in.

Cancel Button:

This cancels the ordering process and returns to the main screen. Choose this button if you want to click more items and then place your order later. No data is changed in the clicker device by clicking this button.

Entering The Order

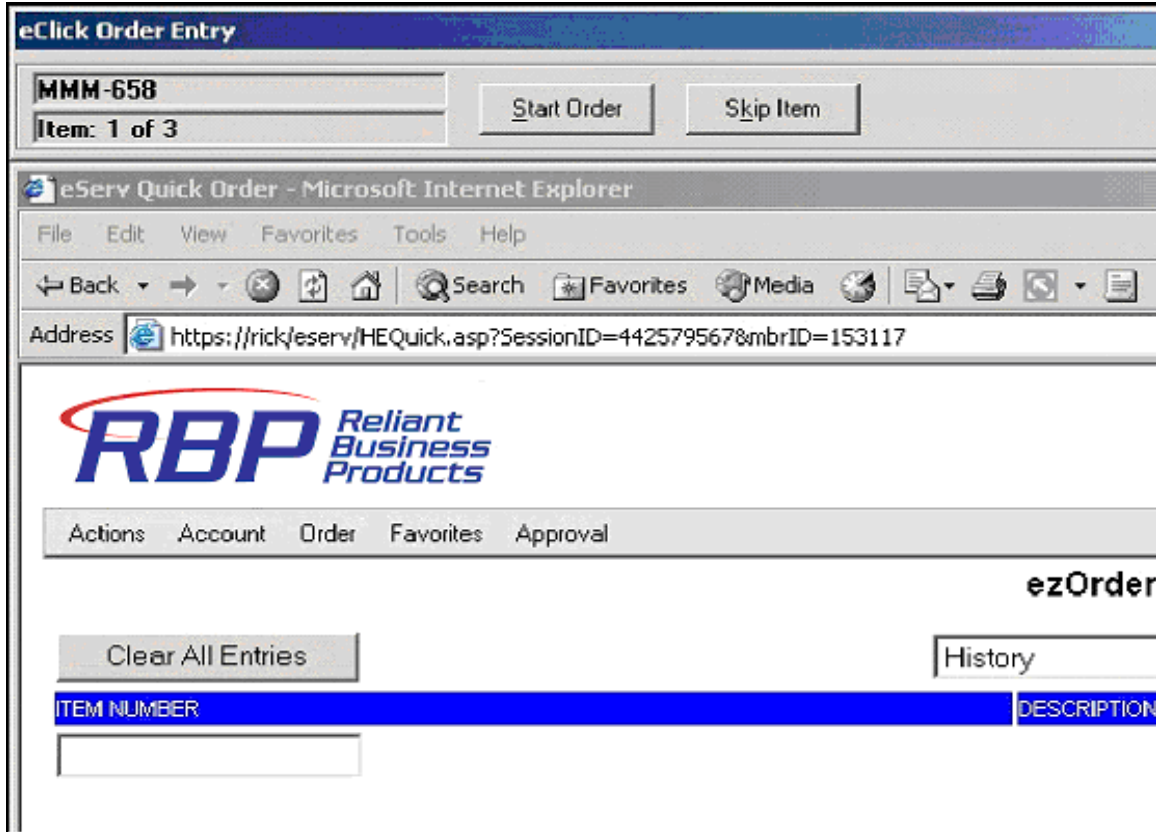
Once you choose the Order Now Button, Internet Explorer is shown and the ROLOS³ Website is contacted. Depending on how you set the options, you may be automatically logged in and be sent to a specific page.

Starting The Order:

eClick waits for you to specifically start the order process by clicking the Start Order Button on the eClick status screen shown above Internet Explorer. This functionality is necessary in order to provide the most flexibility. For example, the you may want to first open an existing held order and then add the current clicker order to this existing order. Also, you may want to perform other manual tasks such as choosing an account and department, setting a PO number, etc.

Also, this will allow you to select your own login and the page to use for ordering.

eClick Status Screen:



Once you are on an 'order enabled' page, you can click the Start Order button to begin the entry of items. The current 'order enabled' pages are ezOrder and Order From Catalog.

Depending on how your options are set, the Start Order Button may change to 'Next Item' after the first click.

eClick will begin the process of entering the items, and quantities if the options are so set, until no more items remain.

Completing the Order:

Once eClick completes the order, a message is displayed indicating there are no more items. You would then clicks OK and the current clicker device contents are cleared making the scanner ready for a new order.

The eClick Status Screen disappears and you are returned to Internet Explorer ready to change, edit, and finally Submit your order.